

BEACH VISTAS

RESIDENCE





Who we are

"We are sharpening our strategy to be one of the world's most valuable, most innovative and most admired companies"

Mr. Mohamed Ali Rashed Alabbar

The Durrës Yachts & Marina project is spearheaded by the Eagle Hills Group of Companies, with Mr. Mohamed Ali Rashed Alabbar as its Chairman. The group is responsible for some of the world's most iconic, innovative and elite developments.

Kush jemi ne

"Ne po perfeksionojmë strategjinë tonë për të qenë një nga kompanitë më të vlefshme, më inovative dhe më të admiruara në botë"

Z. Mohamed Ali Alabbar

Projekti Durrës Yachts & Marina drejtohet nga Grupi i Kompanive Eagle Hills, me Z. Mohamed Ali Rashed Alabbar si President i tyre. Ky grup është përgjegjës për disa nga zhvillimet më ikonike, inovative dhe elitare në botë.

The new pinnacle of luxury living

Introducing sophisticated contemporary living on the Adriatic Riviera, Durrës Yachts & Marina is among the most vibrant destinations overlooking the beachfront and offering deluxe hospitality, luxury shopping, fine dining, and entertainment experiences.

Kurora e re e jetës në luks

Prezantojmë jetesën e sofistikuar bashkëkohore në rivierën e Adriatikut, Durrës Yachts & Marina është një nga destinacionet më dinamike të stilit të jetesës në bregdet dhe ofron mikpritje të shkëlqyer, blerje luksoze, kuzhinë të rafinuar dhe përvoja argëtuese.



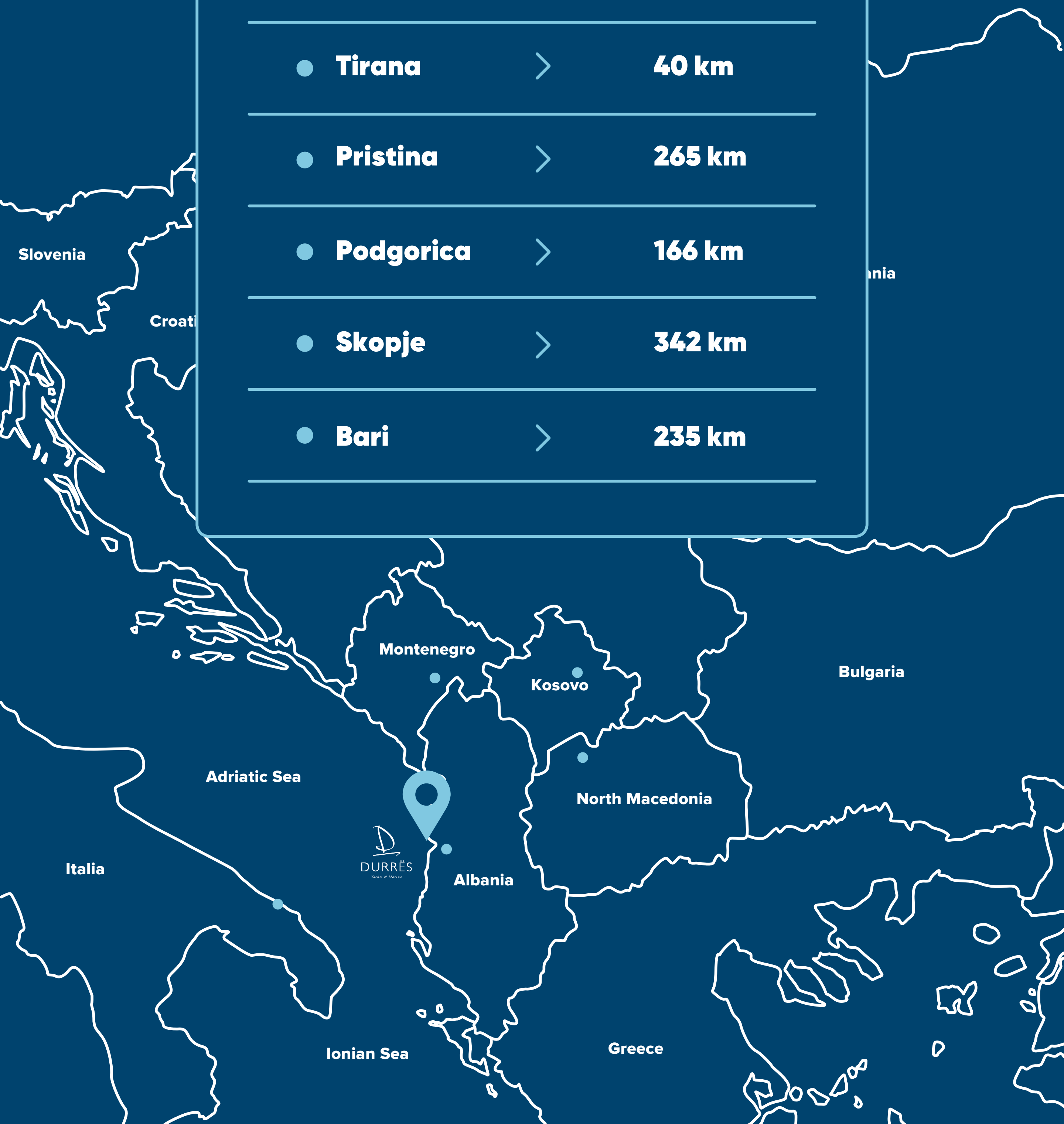
Central Destination

The centrality of Durrës Yachts & Marina makes it at the heart of all the attractions, creating more chances to discover a new wonder each day with every new sunshine.

Destinacion Qendror

Pozicioni qendror i Durrës Yachts & Marina e vendos atë në zemrën e të gjitha atraksioneve, duke krijuar më shumë mundësi për të zbuluar mrekulli të reja në agimin e çdo dite të re.

● Airport	>	31 km
● Tirana	>	40 km
● Pristina	>	265 km
● Podgorica	>	166 km
● Skopje	>	342 km
● Bari	>	235 km





The finest Marina living

Set against the charming green hills and connected to its historic city center, Durrës Yachts & Marina stands out with its unique destination, where people can enjoy yachting while experiencing a beautiful seafront lifestyle with various retail, fine-dining, and hospitality offerings.

Jetesë e Përsosur në Marinë

E pozicionuar pranë kodrave me gjelbërim dhe e lidhur me qendrën historike të qytetit, Durrës Yachts & Marina spikat si destinacion unik, ku njerëzit mund të shijojnë lundrimin me jaht teksa përjetojnë një stil të mrekullueshëm jete buzë detit, me larmi dyqanesh, restorantesh të rafinuar dhe shërbimet më të mira.



World-class Hospitality

The majestic 5 star Address beach resort and The Bristol hotel will redefine hospitality in Durrës Yachts & Marina with their spacious rooms and world-class amenities, such as pools, spas, restaurants and beach access.

Mikpritje e klasit botëror

Resorti bregdetar Address me 5 yje dhe hoteli Bristol do të rimodelojë hotelerinë në Durrës Yachts & Marina me hapësirat e bollshme dhe me shërbimet e klasit botëror si pishinat, wellness, restorantet dhe aksesin në plazh.

Beach Side Living

Enjoy the charming beauty of the beach while wandering over the mesmerizing promenade and gazing at unparalleled sea views from the stunning beach ring.

Të jetuarit pranë plazhit

Shijoni bukurinë joshëse të plazhit ndërsa shëtisni përgjatë shëtitores magjepsëse dhe shikoni pamjet e pakrahasueshme të detit nga unaza që rrethon bregdetin.







High-End Shopping and Fine-Dining

Enjoy a lifestyle like no other with a special fine dining and luxurious retail experiences.

Blerje luksi dhe kulinari superiore

Shijo një stil jetese si asgjë tjetër me kulinari të shkëlqyer dhe përvoja ekskluzive blerjesh.



Welcome to Beach Vistas Residence

Treat your sight and surround yourself with endless beauty and live on the seafront at Beach Vistas Residence. Discover a delightful lifestyle that is encompassed by charming views and state-of-the-art amenities giving you an unparalleled living experience.

Mirësevjen në Beach Vistas

Shijo panoramën dhe rrethoje veten me bukuri të pafundme, jeto buzë detit në Beach Vistas Residence. Zbulo një mënyrë të re jetese që përfshin pamje mahnitëse dhe shërbime të fjalës së fundit, të cilat do t'ju dhurojnë një përvojë jetese si asnjë tjetër.



Endless horizons





Stunning views

Immerse yourself in the mesmerizing vistas and indulge in an enchanting ambiance that embraces boundless beauty. Unearth a thrilling way of life, where every moment is adorned with awe-inspiring panoramas and unparalleled luxuries.

Pamje Mahnitëse

Përjetoni panoramat mbresëlënëse në një atmosferë me bukuri të jashtëzakonshme. Zbuloni një mënyrë jetese emocionuese, të rrethuar nga pamje frymëzuese dhe shërbimet më cilësore.



Lively Marina Living

Live life by the sea at Beach Vistas Residence. Enjoy the infinite horizons and closeness to the Marina of Durrës, where the mornings are always blissful.

Një Marinë plot gjallëri

Jeto jetën buzë detit në Beach Vistas Residence. Shijo horizontin e pafund pranë Marinës së Durrësit, ku mëngjeset janë çdo ditë të hareshme.





A new era of lifestyle on the Adriatic

The true nature of luxury knocks on your doors at Durrës Yachts & Marina.

Vjen epoka e re e stilit te jetesës në Adriatik

Natyra e vërtetë e luksit troket në dyert tuaja në Durrës Yachts & Marina.



Premium Amenities

Beach Vistas Residence is a 7-store structure with 151 apartments, featuring amazing views of the Marina and the beach, high-end restaurants and a unique shopping experience, an infinity pool, apartments with private terraces, ultimate relaxation area, 24/7 security and private parking.

Komoditete me cilësi të lartë

Beach Vistas Residence është një strukturë 7-katëshe me 151 apartamente, me pamje të mahnitshme të Marinës dhe plazhit, restorante të nivelit të lartë dhe eksperiencë unike blerjesh, pishinë infinity, apartamente me tarraca private, zonë relaksi total, siguri 24/7 dhe parkim privat.



Hold the keys to your new wonder

Step into the best life possible, graced with superior amenities and tranquility.

Zotëro çelësat e mrekullisë tënde të re

Zgjidh më të mirën e jetësës luksoze, stolitur nga komoditete superiore dhe qetësi totale.





Aesthetics at the core of everything

Discover the best of style and sophistication in one, two and three-bedroom apartment homes. Contemporary architecture is defined by clean lines, elegant balconies, and large windows, offering unparalleled sea views.

Estetika në thelb të gjithckaje

Zbuloni stilin dhe sofistikimin superior në apartamentet me një, dy dhe tre dhoma gjumi. Arkitektura bashkëkohore përcaktohet nga linja të pastra, ballkone elegante dhe dritare panoramike, që ofrojnë pamje mbresëlënëse drejt detit.



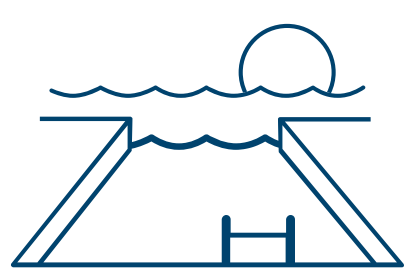
Exquisite Amenities

Shërbime Prestigjioze



Superior in every step

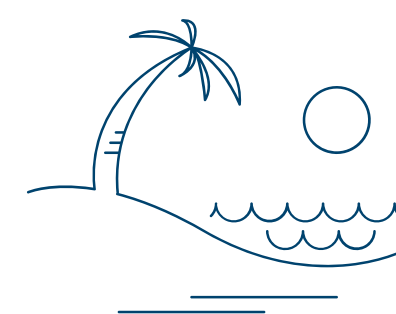
Superior në çdo hap



Infinity Pool
Pishina Infinity



Sea View Apartments
Apartamente me pamje nga deti



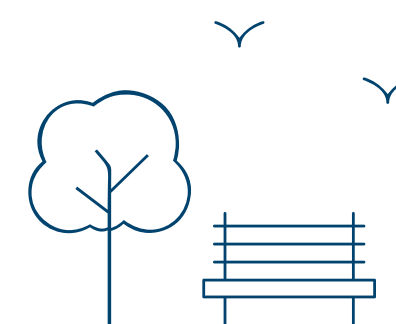
Sandy Beaches
Plazhe ranore



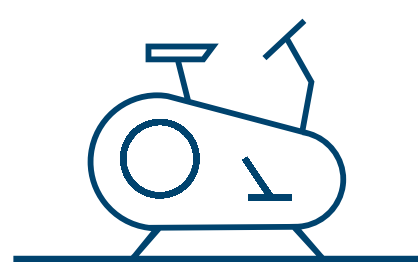
Library
Bibliotekë



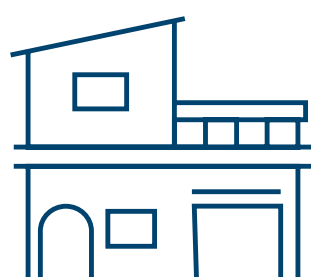
Shopping, Restaurants, and Cafe
Dyqane, kafene dhe restorante



Parks
Pranë parkut



Luxury Gym
Palestër luksoze



Residents Club
Klub për rezidentët



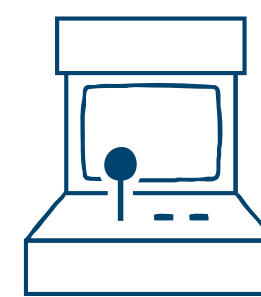
Bike Parking
Parkim biçikletash



Beach Club
Klub për plazh



Entertainment Hub
Hapësirë për arte dhe dëfrim



Game Room
Hapësira lojrash



ADDRESS BEACH RESORT
DURRËS

Access to

THE BRISTOL

LUXURY HOTELS & RESORTS
DURRËS

Access to

BEACH VISTAS

RESIDENCE

3 BEDROOM TYPE - 1

APARTAMENT AREA SIPËRFAQE APARTAMENTI 133 SQ.M M²

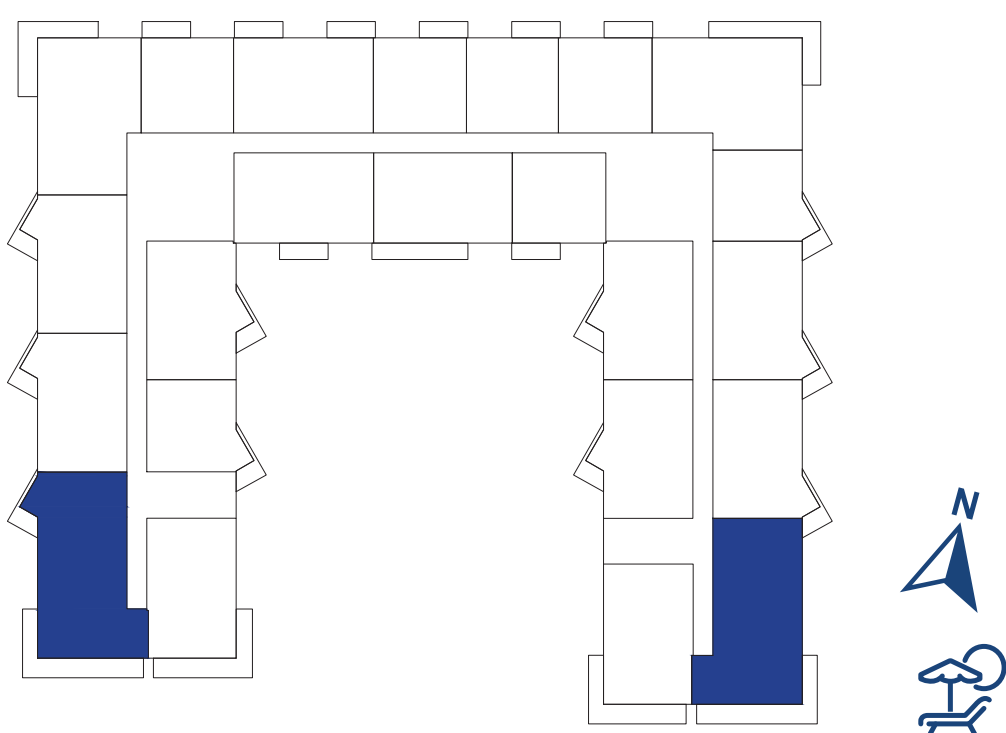
BALCONY AREA SIPËRFAQE BALLKONI 25 SQ.M M²

NET AREA SIPËRFAQE NETO 158 SQ.M M²

MASTER PLAN



KEY PLAN



Disclaimer

1. All room dimensions are in metric and measured to structural elements and exclude wall finishes and construction tolerances.
2. All dimensions have been provided by our consultant architects.
3. All materials, dimensions, features and amenities are approximate at the time of printing.
4. Actual area may vary from stated area and unit direction may vary from unit to unit. Drawing not to scale. The developer reserves the right to make revisions to the floor plans and any features, materials, dimensions, drawing and amenities mentioned in this brochure without notice.

BEACH VISTAS

RESIDENCE

2 BEDROOM TYPE - 1

APARTAMENT AREA SIPËRFAQE APARTAMENTI 98.77 SQ.M M²

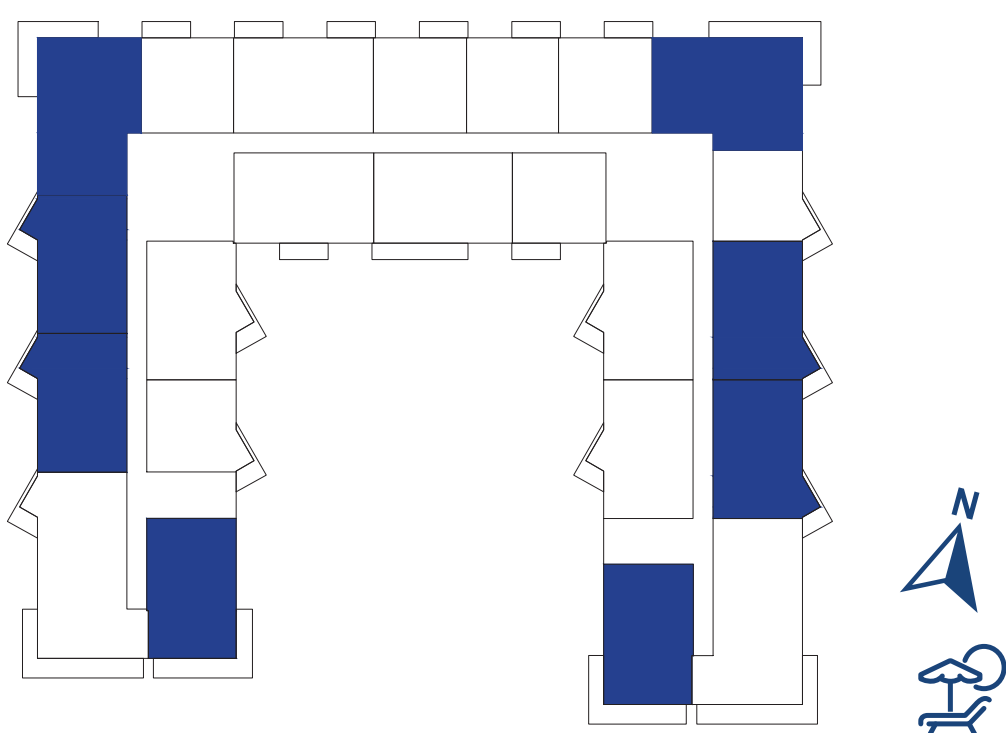
BALCONY AREA SIPËRFAQE BALLKONI 10.51 SQ.M M²

NET AREA SIPËRFAQE NETO 109.28 SQ.M M²

MASTER PLAN



KEY PLAN



Disclaimer

1. All room dimensions are in metric and measured to structural elements and exclude wall finishes and construction tolerances.
2. All dimensions have been provided by our consultant architects.
3. All materials, dimensions, features and amenities are approximate at the time of printing.
4. Actual area may vary from stated area and unit direction may vary from unit to unit. Drawing not to scale. The developer reserves the right to make revisions to the floor plans and any features, materials, dimensions, drawing and amenities mentioned in this brochure without notice.

BEACH VISTAS

RESIDENCE

2 BEDROOM TYPE - 2

APARTAMENT AREA SIPËRFAQE APARTAMENTI 98.77 SQ.M M²

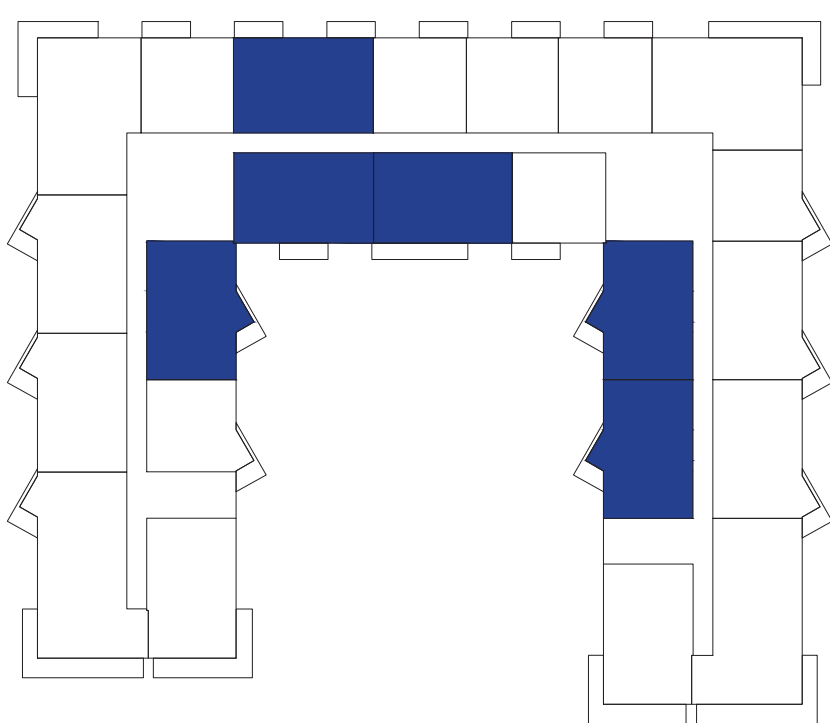
BALCONY AREA SIPËRFAQE BALLKONI 10.51 SQ.M M²

NET AREA SIPËRFAQE NETO 109.28 SQ.M M²

MASTER PLAN



KEY PLAN



Disclaimer

1. All room dimensions are in metric and measured to structural elements and exclude wall finishes and construction tolerances.
2. All dimensions have been provided by our consultant architects.
3. All materials, dimensions, features and amenities are approximate at the time of printing.
4. Actual area may vary from stated area and unit direction may vary from unit to unit. Drawing not to scale. The developer reserves the right to make revisions to the floor plans and any features, materials, dimensions, drawing and amenities mentioned in this brochure without notice.

BEACH VISTAS

RESIDENCE

1 BEDROOM TYPE - 1

APARTAMENT AREA SIPËRFAQE APARTAMENTI 65.30 SQ.M M²

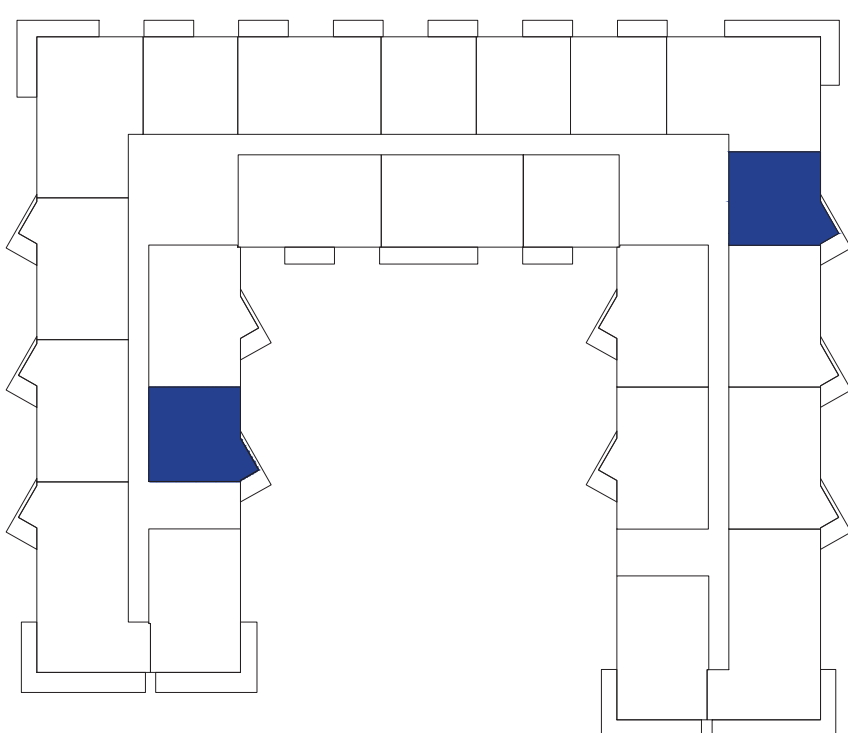
BALCONY AREA SIPËRFAQE BALLKONI 6.51 SQ.M M²

NET AREA SIPËRFAQE NETO 71.81 SQ.M M²

MASTER PLAN



KEY PLAN



Disclaimer

1. All room dimensions are in metric and measured to structural elements and exclude wall finishes and construction tolerances.
2. All dimensions have been provided by our consultant architects.
3. All materials, dimensions, features and amenities are approximate at the time of printing.
4. Actual area may vary from stated area and unit direction may vary from unit to unit. Drawing not to scale. The developer reserves the right to make revisions to the floor plans and any features, materials, dimensions, drawing and amenities mentioned in this brochure without notice.

BEACH VISTAS

RESIDENCE

1 BEDROOM TYPE - 2

APARTAMENT AREA SIPËRFAQE APARTAMENTI 65.30 SQ.M M²

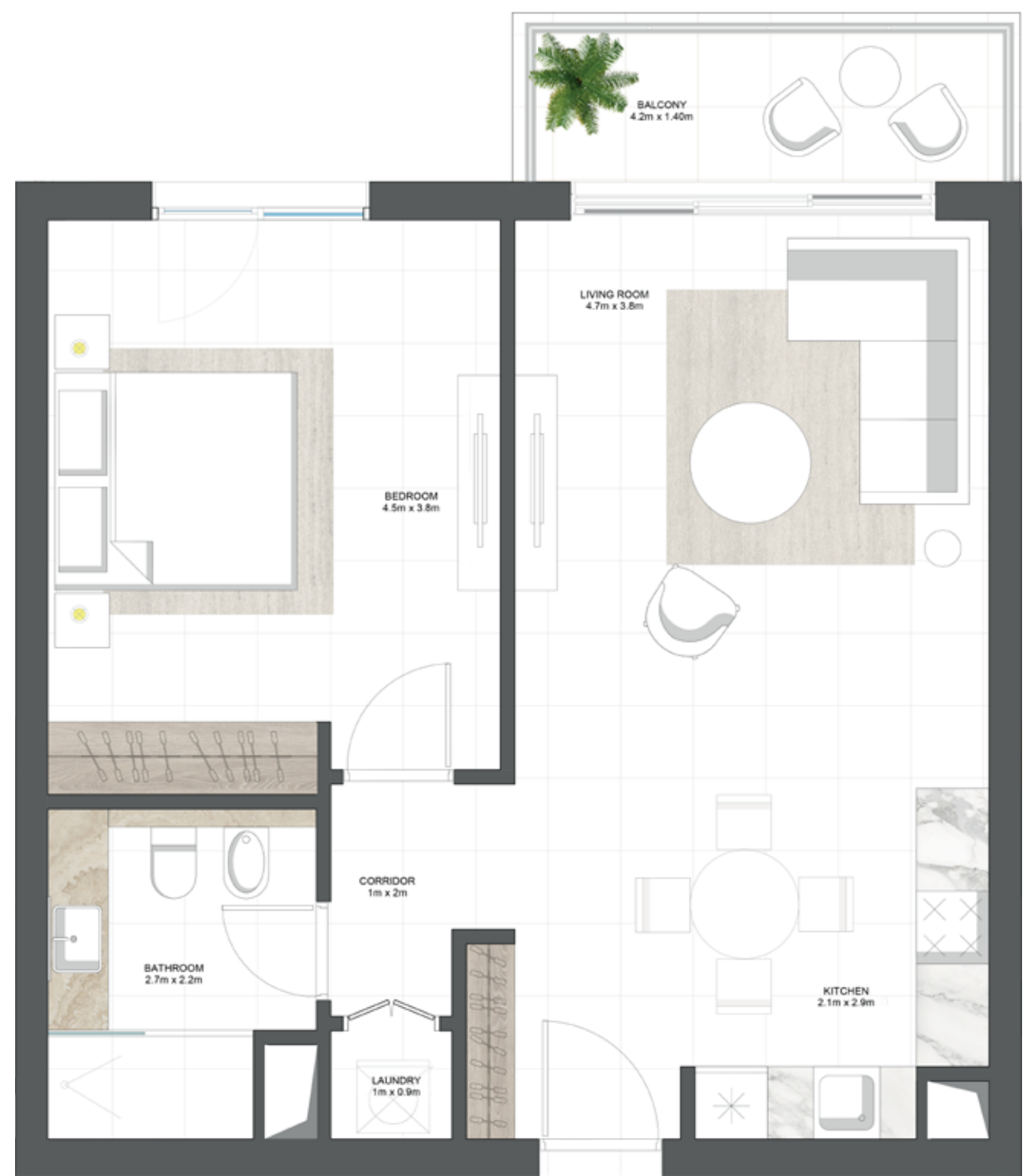
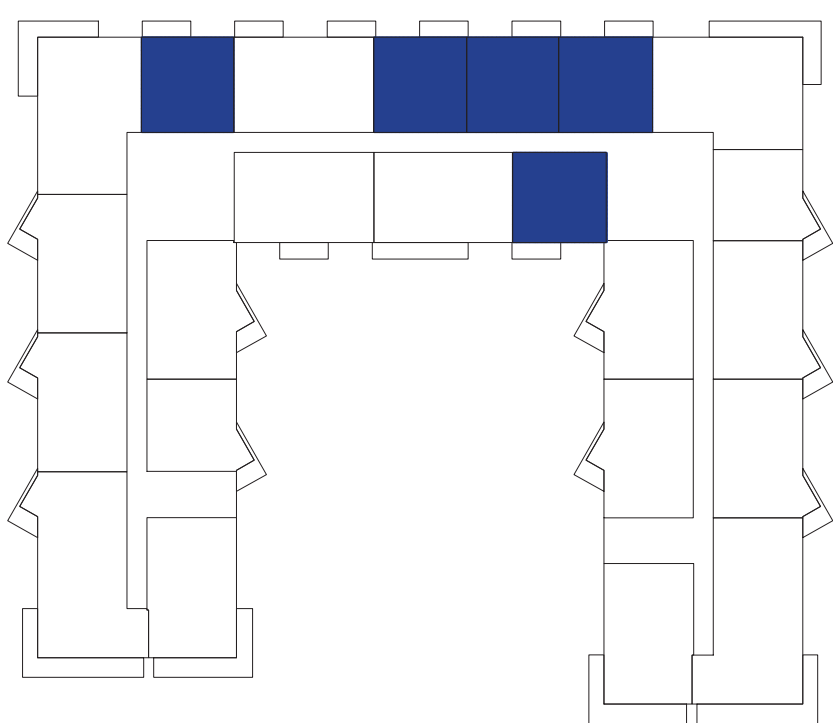
BALCONY AREA SIPËRFAQE BALLKONI 6.51 SQ.M M²

NET AREA SIPËRFAQE NETO 71.81 SQ.M M²

MASTER PLAN



KEY PLAN



Disclaimer

1. All room dimensions are in metric and measured to structural elements and exclude wall finishes and construction tolerances.
2. All dimensions have been provided by our consultant architects.
3. All materials, dimensions, features and amenities are approximate at the time of printing.
4. Actual area may vary from stated area and unit direction may vary from unit to unit. Drawing not to scale. The developer reserves the right to make revisions to the floor plans and any features, materials, dimensions, drawing and amenities mentioned in this brochure without notice.



DURRËS

Yachts & Marina

For more information, please contact us at:

0800 88 08 | +355 52 28 88 88
info@durresyachtsmarina.com

