



DURRËS

Yachts & Marina

seaside

RESIDENCE







WHO WE ARE

"We are reinforcing our company's strategy to benchmark among the world's most valuable, innovative, and admired companies,"

Mohamed ALI Al-Abbar

Mohamed Ali Al-Abbar is the Chairman of Eagle Hills companies group, which builds the world's most iconic, innovative, and upscale developments across different markets.

KUSH JEMI NE

"Ne po perfeksionojmë strategjinë tonë për të qenë një nga kompanitë më të vlefshme, më inovative dhe më të admiruara në botë"

Mohamed ALI Al-Abbar

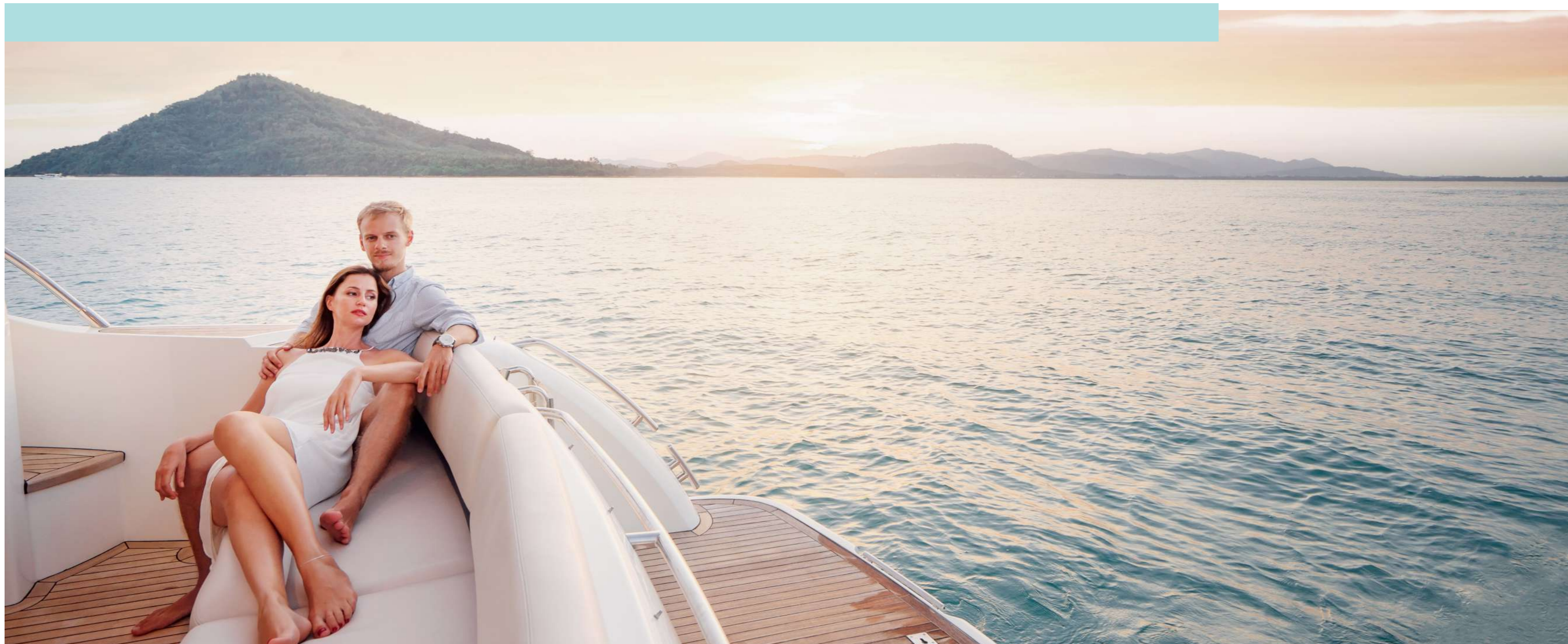
Projekti Durrës Yachts & Marina drejtohet nga Grupi i Kompanive Eagle Hills, me Z. Mohamed Ali Rashed Alabbar si President i tyre. Ky grup është përgjegjës për disa nga zhvillimet më ikonike, inovative dhe elitare në botë.

THE NEW PINNACLE OF LUXURY LIVING

Introducing sophisticated contemporary living on the Adriatic Riviera, Durrës Yacht & Marina is among the most vibrant destinations overlooking the beachfront and offering deluxe hospitality, luxury shopping, fine dining, and entertainment experiences.

JETESË LUKSOZE NË DIMENSIONE TË REJA

Një hyrje në jetën e sofistikuar bashkëkohore në Rivierën e Adriatikut, Durrës Yachts & Marina është një nga destinacionet më të gjalla të stilit të jetesës bregdetare që ofron mikpritje superiore, blerje luksoze, kuzhinë të përzgjedhur dhe përvoja argëtuese.



CENTRAL DESTINATION

The centrality of Durrës makes it the heart of all the attractions, creating more chances to discover a new wonder each day with every new sunshine.

• **Airport** > 31 KM

• **Tirana** > 40 KM

• **Pristina** > 265 KM

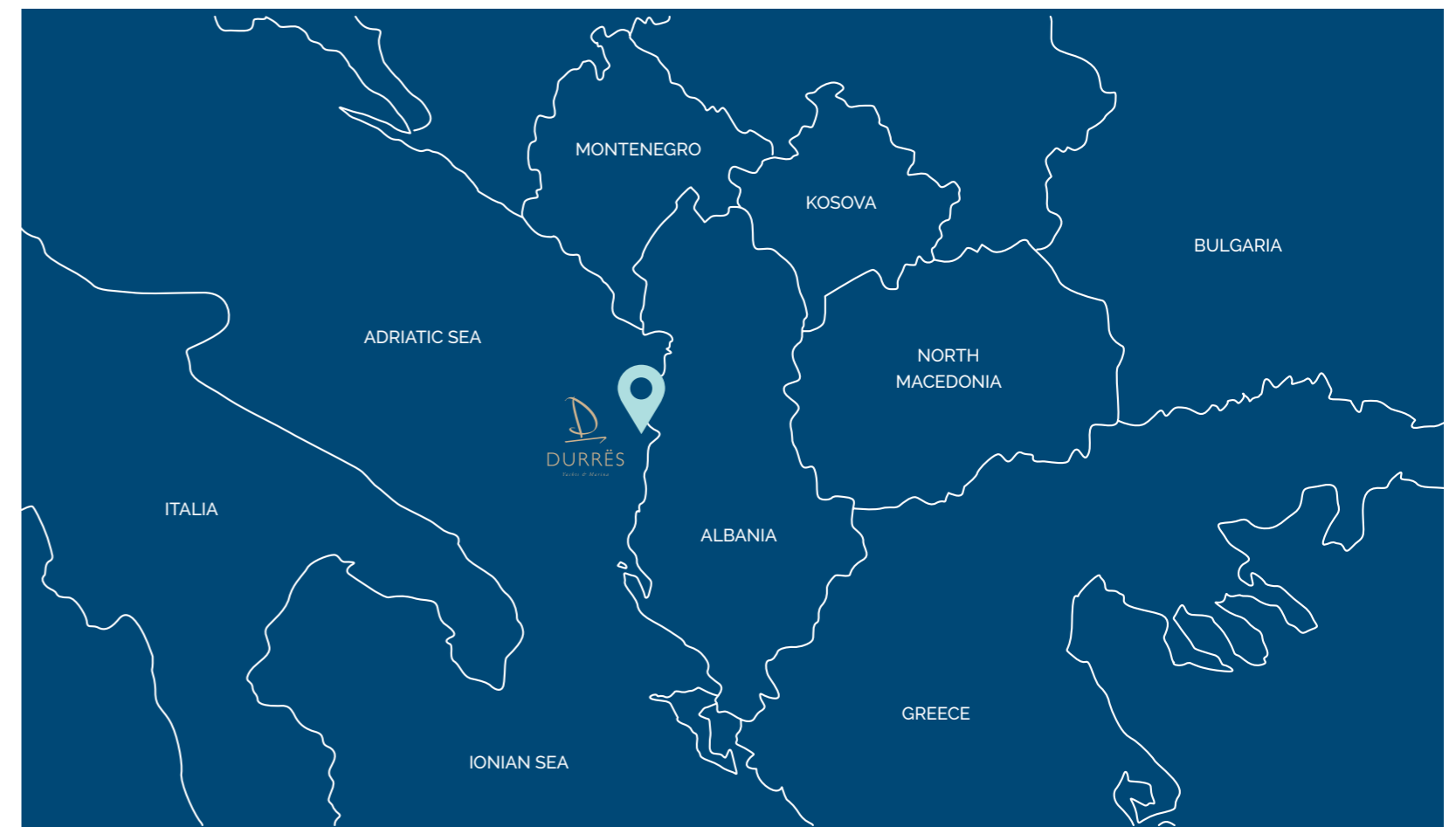
• **Podgorica** > 166 KM

• **Skopje** > 342 KM

• **Bari** > 235 KM

GJITHÇKA NË NJË DESTINACION

Pozicioni qendror i Durrësit e bën atë zemrën e të gjitha atraksioneve, duke krijuar më shumë shanse për të zbuluar një mrekulli të re sa herë shkëlqen dielli i një ditë të re.



THE FINEST MARINA LIVING

Set against the charming green hills and connected to its historic city center, Durrës Yachts & Marina stand out with its unique destination, where people can enjoy yachting while experiencing a beautiful seafront lifestyle with various retail, fine-dining, and hospitality offerings.

JETESË E PËRSOSUR NË MARINË

Vendosur krah kodrash të gjelbëruara dhe e lidhur me qendrën historike të qytetit, Durrës Yachts & Marina spikat si një destinacion unik, ku njerëzit mund të shijojnë jahtet, ndërsa përjetojnë një stil të mrekullueshëm jetese buzë detit me larmi dyqanesh, restorantesh dhe strukturash mikpritjeje.





MIKPRITJE E NIVELIT BOTËROR

Resorti madhështor bregdetar me 5 yje Address dhe hoteli Bristol do të ripërcaktojnë mikpritjen në Durrës me dhomat plot hapësirë, pishinat, spa-të dhe aksesin në plazh.

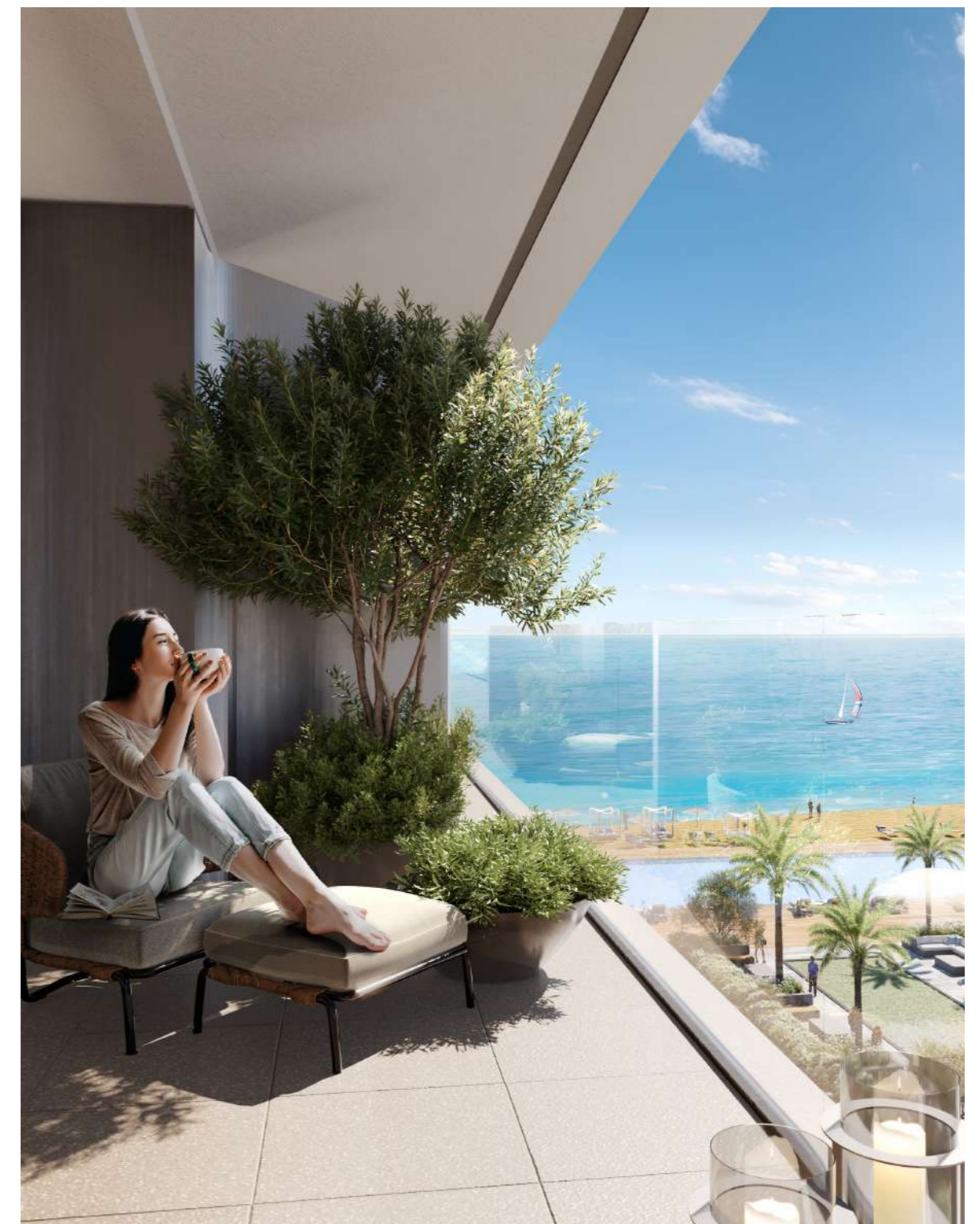
WORLD-CLASS HOSPITALITY

The majestic 5 star Address beach resort and the Bristol hotel will redefine hospitality in Durrës with their spacious rooms, pool, spa, and beach access.



ADDRESS BEACH RESORT
DURRËS

THE BRISTOL
Hotel & Resorts





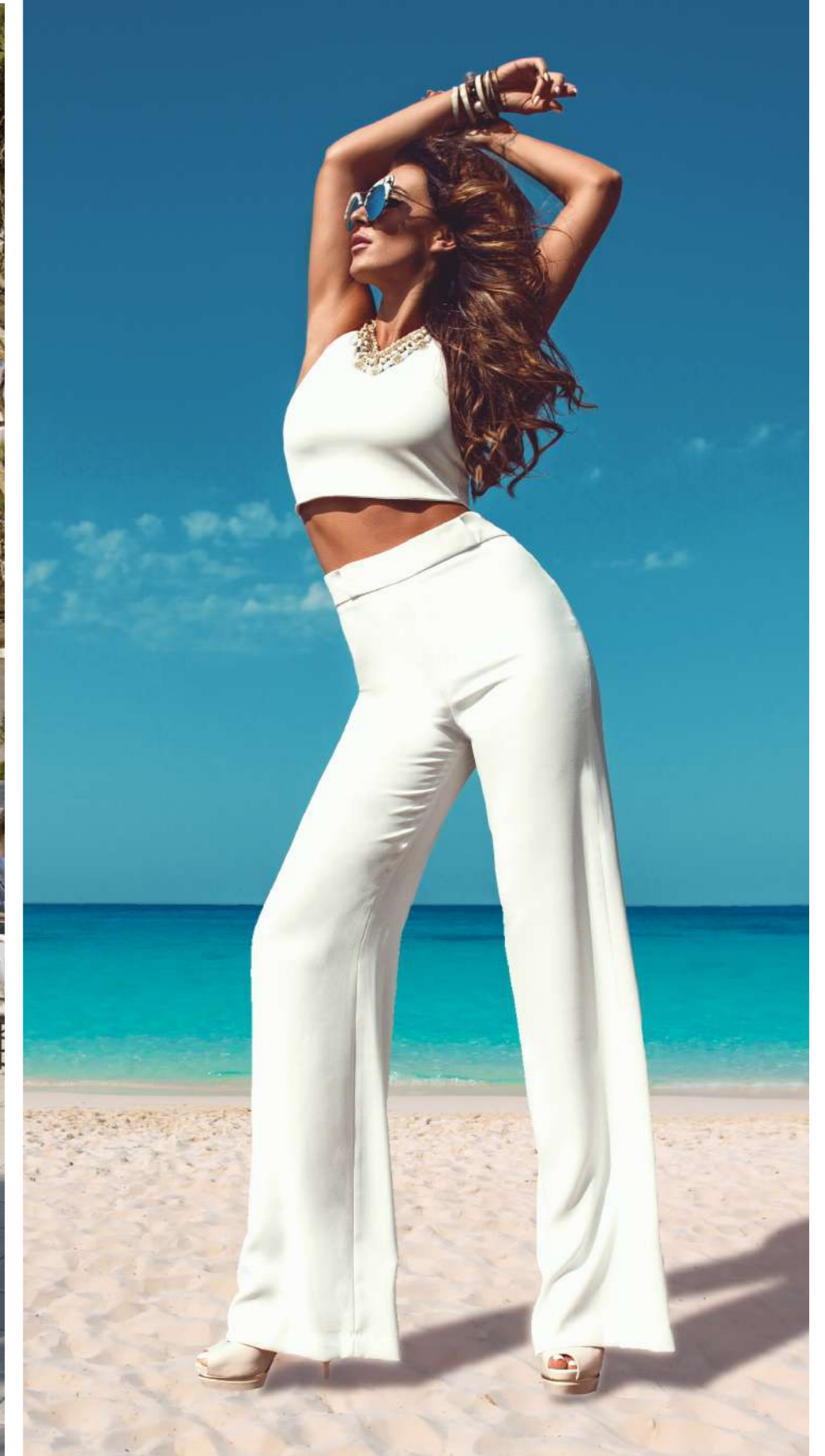
BEACH SIDE LIVING

Enjoy the sea's charming beauty while wandering over the mesmerizing promenade and gazing unparalleled sea views from the stunning beach ring.

UNAZË MAHNITËSE BREGDETARE

Shijoni bukurinë magjepsëse të detit ndërsa shëtisni përgjatë unazës që rrethon bregdetin.





HIGH-END SHOPPING AND FINE-DINING

Listen to the blue waters calling in the opulent destination with fine dining and luxurious retail experiences.

PËRVOJË BLERJESH DHE KUZHINE SI ASNJË TJETËR

Dëgjoni thirrjen e ujërave blu në një destinacion luksoz me ushqim fantastik dhe dyqane prestigjioze.





seaside

RESIDENCE



seaside

RESIDENCE

An unprecedented experience blesses your Seaside heavenly life, by being a few steps apart from every vibrant place; from the charming beach, magnificent promenade, luxurious town center, the unrivaled horizons of Durrës international marina and the exceptional 5-star hospitality of Address Beach Resort and The Bristol hotels.

Një përvojë e pashoqe bekon jetën tuaj përrallore në Seaside, pasi jeni vetëm disa hapa larg nga të gjitha pikat e nxehta; nga plazhi i jashtëzakonshëm, shëtitorja e mrekullueshme, qendra luksoze e qytetit, horizonti mbresëlënës i Durrës Yachts & Marina dhe mikpritja e jashtëzakonshme me 5 yje në hotelet Address dhe Bristol.





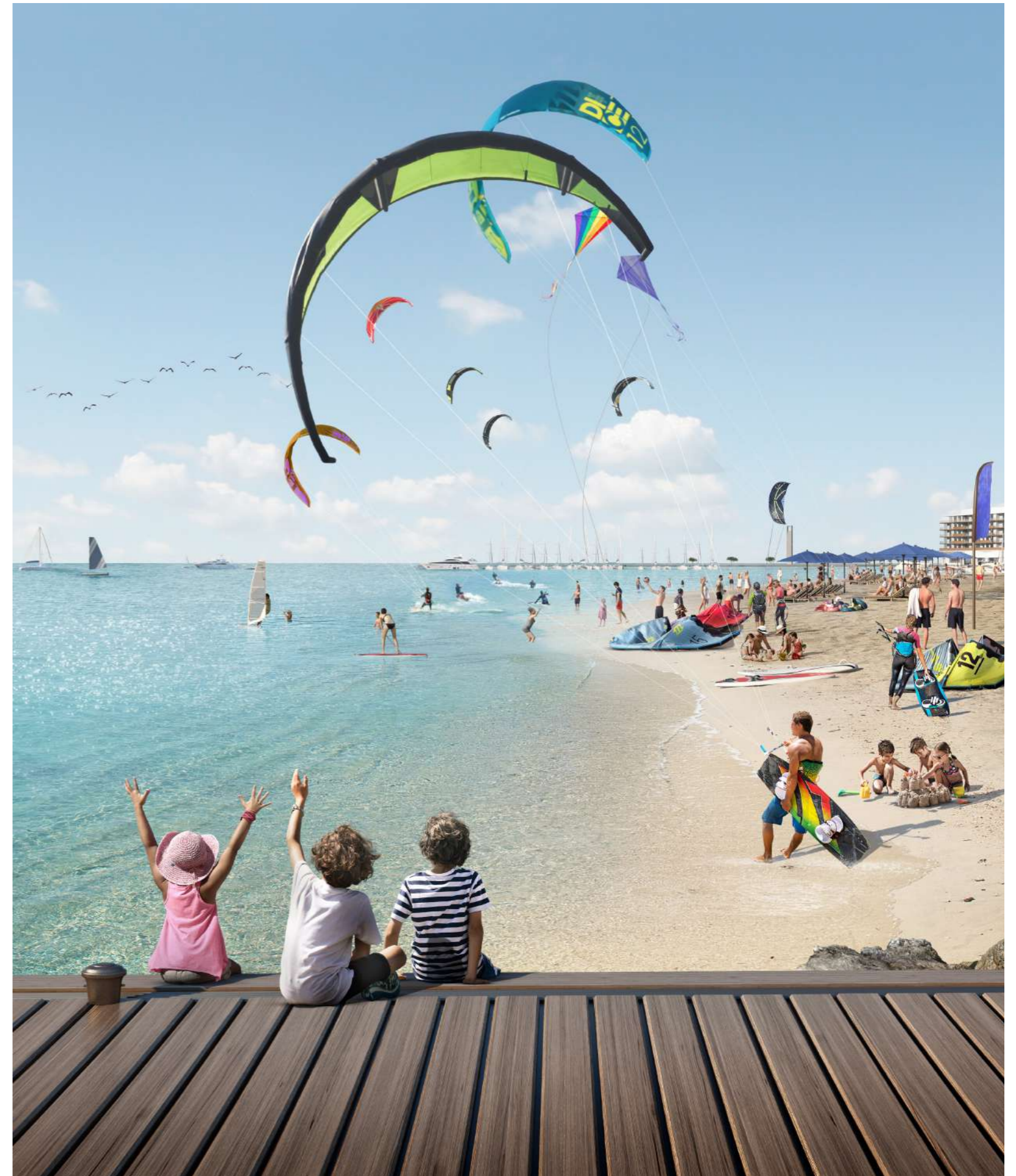
A VIBRANT LIFE AT
YOUR DOORSTEP

RRETHUAR NGA
GJALLËRIA

LIVELY BEACHSIDE HOMES



REZIDENCA PLOT JETË BUZË DETIT



LIVE ASIDE
LUXURY

JETO PRANË
LUKSIT



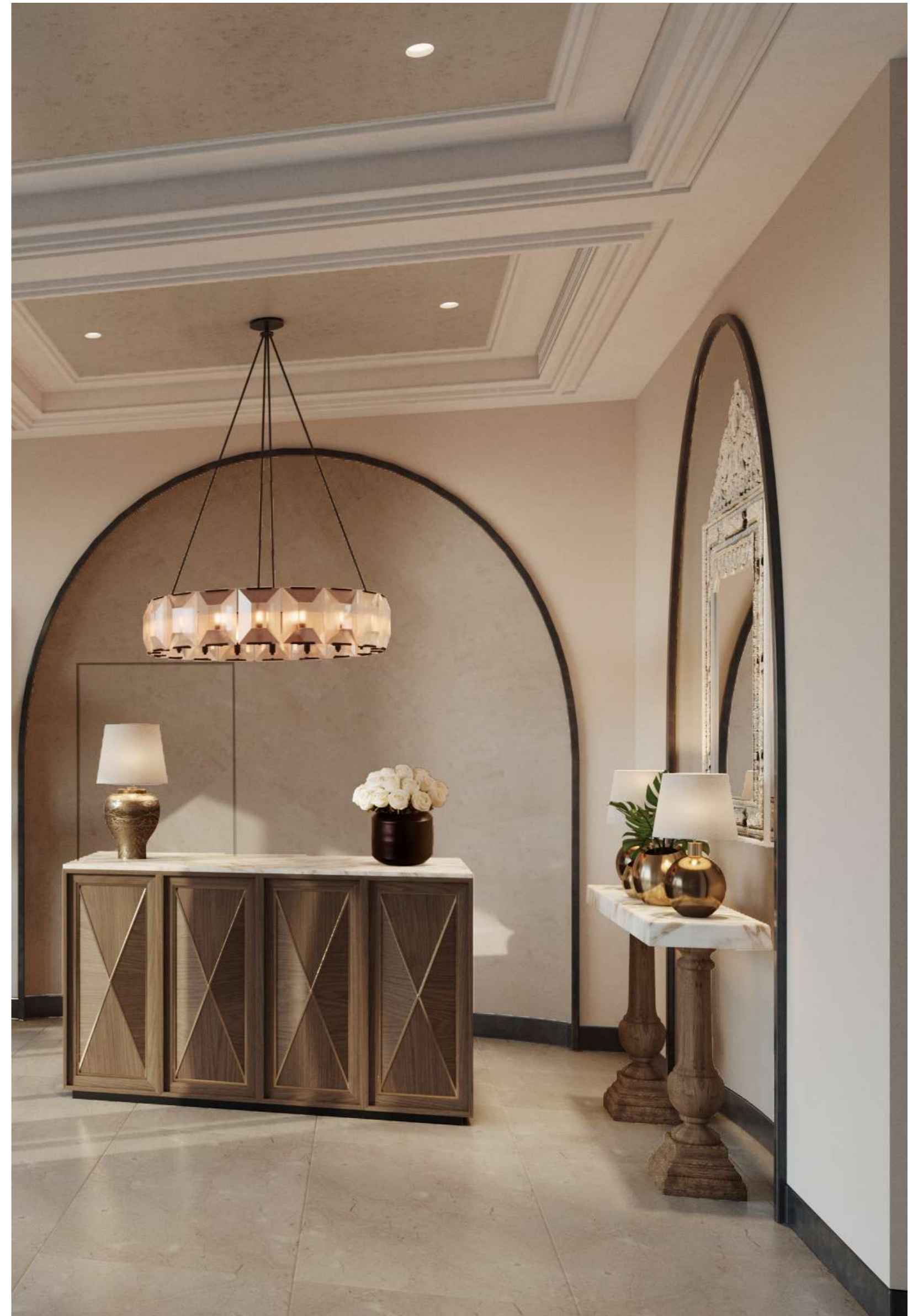


STATE OF ART AMENITIES

Seaside residence is the ultimately designed 7-floors building with 153 apartments, upscale commercial outlets, and high-end restaurants. Its homes have stunning views, mesmerizing pool, 24/7 security, and private parking.

SHËRBIME TË KLASIT SUPERIOR

Rezidenca luksoze Seaside është një ndërtesë 7-katëshe me 153 apartamente, njësi të plota tregtare dhe restorante të nivelit të lartë. Ndërtesa ofron pamje mahnitëse të detit Adriatik dhe marinës, një pishinë mbresëlënëse, siguri 24/7 dhe parking privat.

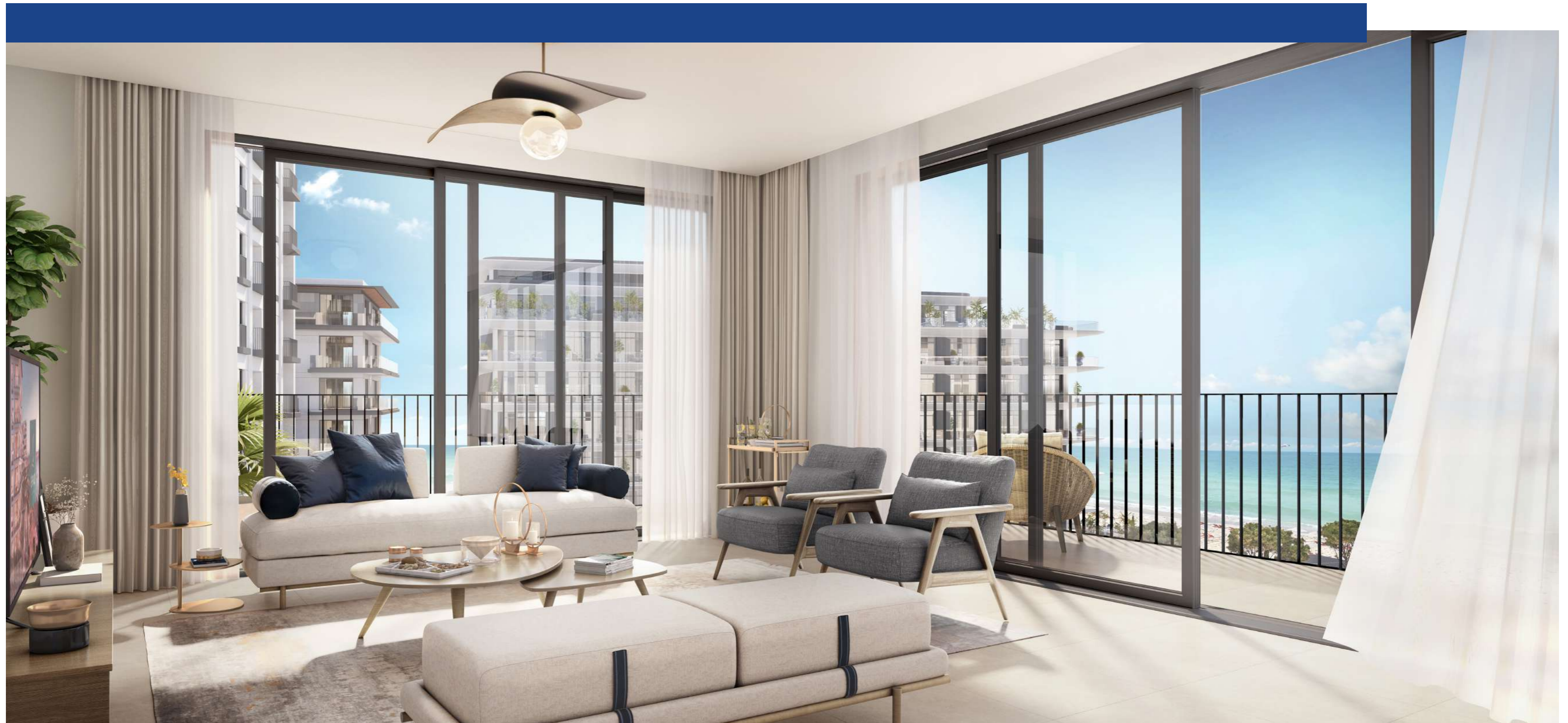


ELEGANT INTERIORS

The exceptional interior will elevate your living with the contemporary style and beautiful indoor beauty, giving you a home filled with heart-filling warmth.

INTERIORE ELEGANTE

Mjediset e brendshme të zgjedhura me kujdes pasurojnë jetën tuaj falë stilit bashkëkohor dhe bukurisë së brendshme, duke ju dhuruar një shtëpi plot ngrohtësi që të mbush zemrën.





seaside
RESIDENCE

EXQUISITE AMENITIES
SHËRBIME PRESTIGJIOZE



SEA VIEW APARTMENTS
Apartamente me pamje nga deti



POOL
Pishina



SANDY BEACHES
Plazhe ranorë



ADDRESS BEACH RESORT

DURRËS
Access to



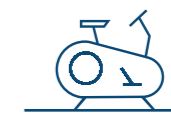
SHOPPING, RESTAURANTS, AND CAFES
Dyqane, Kafene dhe Restorante

THE BRISTOL

Hotel & Resorts
Access to



PARKS
Pranë parkut



LUXURY GYM
Palestër luksoze



RESIDENTS CLUB
Klub për rezidentët



BIKE PARKING
Parkim biçikletash



BEACH CLUB
Klub në plazh



ENTERTAINMENT HUB
Hapësirë për arte dhe dëfrim



GAME ROOM
Hapësira lojrash



LIBRARY
Bibliotekë



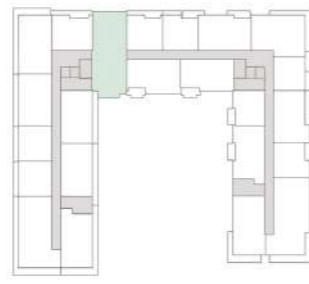
1 BEDROOM

APARTMENT AREA	SIPËRFAQE APARTAMENTI	64.38 SQ.M m²
BALCONY AREA	SIPËRFAQE BALLKONI	7.10 SQ.M m²
NET AREA	SIPËRFAQE NETO	71.48 SQ.M m²

MASTER PLAN



KEY PLAN



Disclaimer

1. All room dimensions are in metric and measured to structural elements and exclude wall finishes and construction tolerances. 2. All dimensions have been provided by our consultant architects. 3. All materials, dimensions, features and amenities are approximate at the time of printing. 4. Actual area may vary from stated area and unit direction may vary from unit to unit. Drawing not to scale. The developer reserves the right to make revisions to the floor plans and any features, materials, dimensions, draqing and amenities mentioned in this brochure without notice.

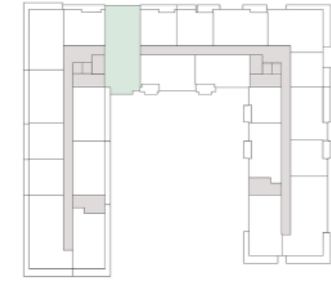
2 BEDROOM TYPE - A

APARTMENT AREA	SIPËRFAQE APARTAMENTI	91.31 SQ.M m²
BALCONY AREA	SIPËRFAQE BALLKONI	6.72 SQ.M m²
NET AREA	SIPËRFAQE NETO	98.03 SQ.M m²

MASTER PLAN



KEY PLAN



Disclaimer

1. All room dimensions are in metric and measured to structural elements and exclude wall finishes and construction tolerances. 2. All dimensions have been provided by our consultant architects. 3. All materials, dimensions, features and amenities are approximate at the time of printing. 4. Actual area may vary from stated area and unit direction may vary from unit to unit. Drawing not to scale. The developer reserves the right to make revisions to the floor plans and any features, materials, dimensions, draqing and amenities mentioned in this brochure without notice.

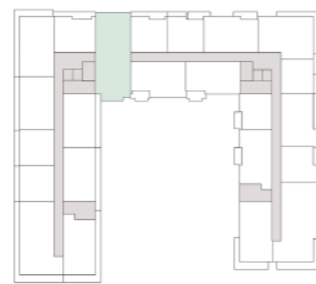
2 BEDROOM TYPE - B

APARTMENT AREA	SIPËRFAQE APARTAMENTI	89.50 SQ.M m²
BALCONY AREA	SIPËRFAQE BALLKONI	6.77 SQ.M m²
NET AREA	SIPËRFAQE NETO	96.27 SQ.M m²

MASTER PLAN



KEY PLAN



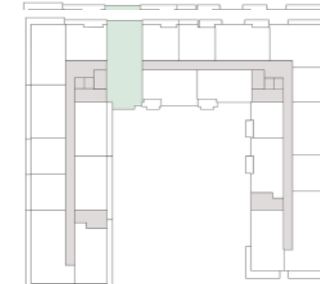
3 BEDROOM

APARTMENT AREA	SIPËRFAQE APARTAMENTI	145.21 SQ.M m²
BALCONY AREA	SIPËRFAQE BALLKONI	27.08 SQ.M m²
NET AREA	SIPËRFAQE NETO	171 SQ.M m²

MASTER PLAN



KEY PLAN



Disclaimer

1. All room dimensions are in metric and measured to structural elements and exclude wall finishes and construction tolerances. 2. All dimensions have been provided by our consultant architects. 3. All materials, dimensions, features and amenities are approximate at the time of printing. 4. Actual area may vary from stated area and unit direction may vary from unit to unit. Drawing not to scale. The developer reserves the right to make revisions to the floor plans and any features, materials, dimensions, draquing and amenities mentioned in this brochure without notice.



Disclaimer

1. All room dimensions are in metric and measured to structural elements and exclude wall finishes and construction tolerances. 2. All dimensions have been provided by our consultant architects. 3. All materials, dimensions, features and amenities are approximate at the time of printing. 4. Actual area may vary from stated area and unit direction may vary from unit to unit. Drawing not to scale. The developer reserves the right to make revisions to the floor plans and any features, materials, dimensions, draquing and amenities mentioned in this brochure without notice.

